

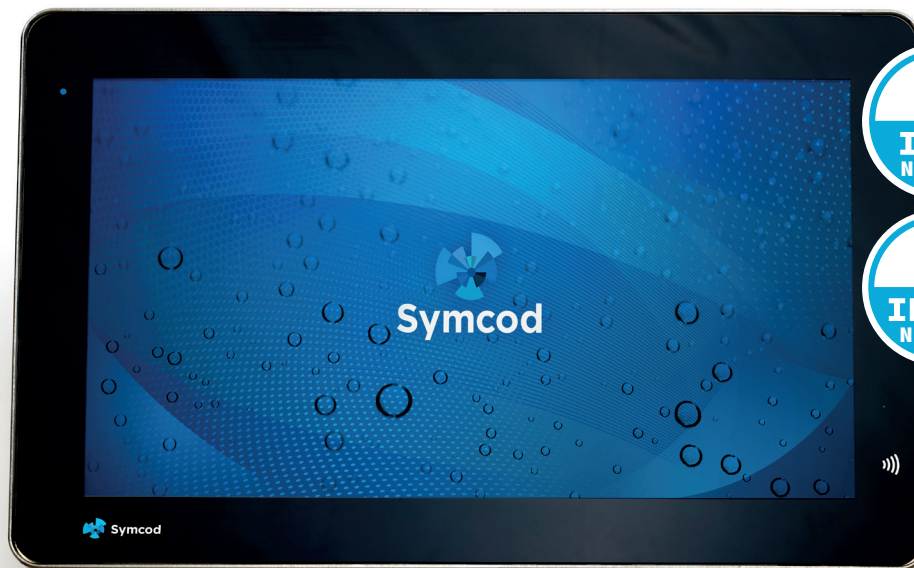


Symcod

Industrial computers and
IT equipment manufacturer

Waterproof Industrial Computer

- Sealed All-in-One PC
- Stainless-steel Housing
- P-Cap Touch Screen



MODULARITY!
Connectivity
Options &
Accessories



Demo Loan

Fast Delivery

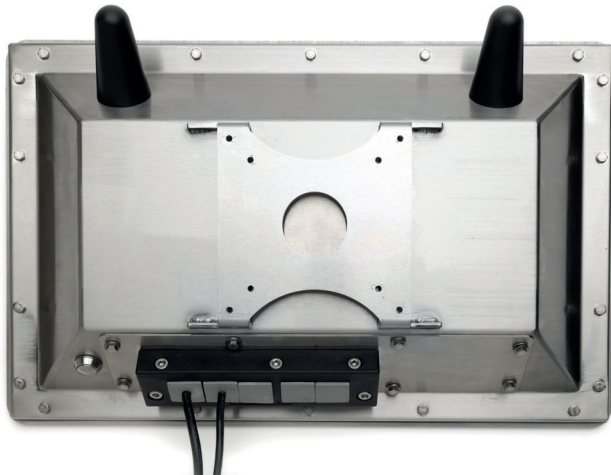
**Customization
with your logo**

**Technical Support
& Repair Service**





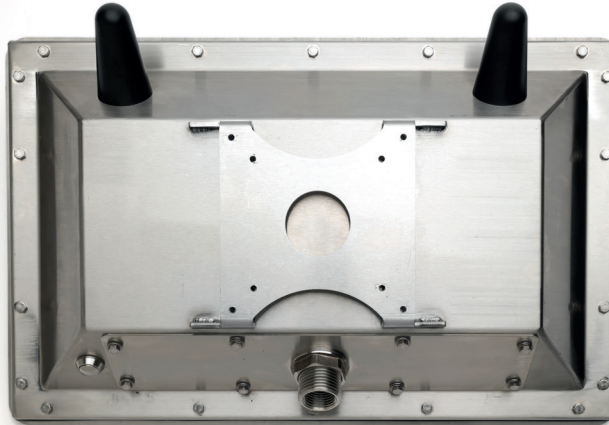
Pick the Connection Type that Really Suits Your Needs!



CubeConnect™



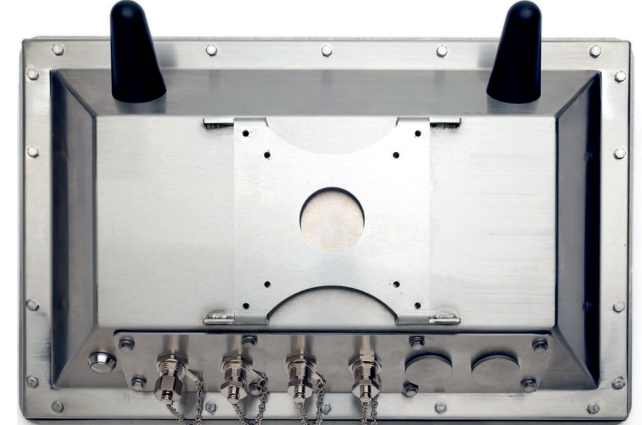
- › Works seamlessly with standard cables
- › Fast & easy installation



OneConnect™



- › Fewer connections reduce risks of accidents
- › Saves time during cleaning shifts



SealConnect™



- › Meets the highest hygienic standards
- › Withstands high-pressure water & steam

W156M-6x

Waterproof Industrial All-In-One PC with 15.6" Touch Screen

Ingress protection	IP66 or IP69K / NEMA 4x or NEMA 6P
Housing	Stainless steel / VESA 100 mounting (bracket not included)
Screen	15.6" tempered glass projected capacitive touchscreen / Ratio 16:9 / Resolution 1920 x 1080 / 350 nits / Shatterproof strengthened glass substrate
Power Supply	AC with external 120/240 VCC 60/50 Hz sealed power supply included
Temperature	Operating : -20 °C* to 55 °C (-4 °F* to 131 °F) Storage : -20 °C to 60 °C (-4 °F to 140 °F) Relative humidity : 100% *required conditions

Approximate Weight 5,45 kg (12 lb)

Accessories & Options CubeConnect™ / OneConnect™ / SealConnect™ /
Stainless steel VESA 100 wall mount / Stainless steel
adjustable stand / Customization /
Silicone sealed keyboard

Limited Warranty 2 years on parts and labour at our workshop
(extended warranty available)

	ARM Rockchip D3588	Intel Alder Lake N97
Microprocessor	ARM Rockchip D3588	Intel Alder Lake N97
Memory (RAM)	8 GB	8 GB or more
Storage	32 GB	240 GB or more
Included I/O**	2 x LAN 1 GB 1 x USB 3.0 (STD) 1 x USB 3.0 (OTG) 2 x USB 2.0 1 x HDMI	1 x LAN 2.5 GB 1 x LAN 1.0 GB 2 x USB 3.2 Gen2 2 x USB 2.0 1 x SVGA 1 x HDMI 1 x DP
Optional I/O**	1 x COM	up to 3 x COM
Operating System	Android 12 or Linux Debian	Windows 10/11 or Linux Ubuntu
Network Connectivity	WiFi/Bluetooth included	WiFi/Bluetooth in option

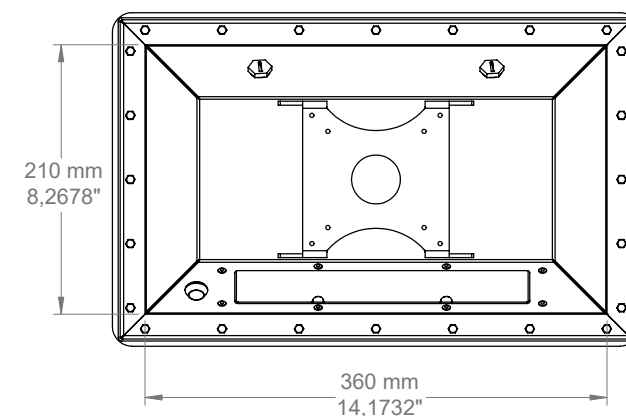
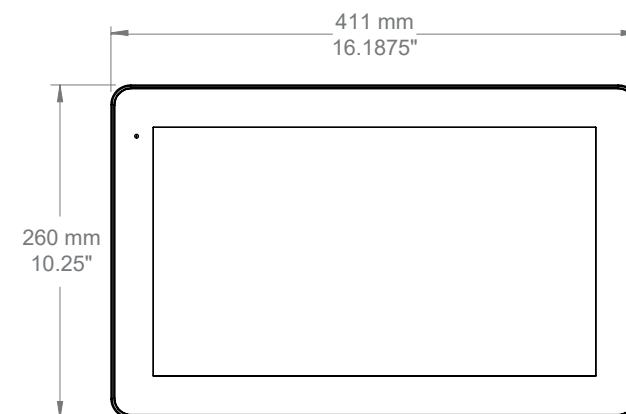
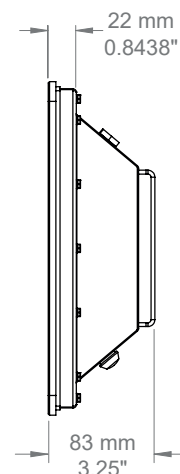
**Up to 5 I/O with the SealConnect™ connection option



LINUX



Symcod



Tolerance: ±1/8" (±3 mm)

All information contained in this document and all copyrights are
the property of Symcod Inc. Specifications are subject to change
without notice. Revision : March 2025



[symcod.com](https://www.symcod.com)

Contact us now to find out more!

1 800 203-9421 / sales@symcod.com